

86.6
 Twenty Four **COUNTRY DANCES** for the Year 1772
 With proper Tunes & Directions to each Dance, as they
 are Perform'd at Court, Bath, & all Publick Assemblys. Price 6^d.

L O N D O N

Printed for Chas^r & Sam^l Thompson, in S^t. Pauls Church Yard.

Where may be had

200 Favourite Country Dances Bound	3	4	6
100 Favourite Minuets for the Harpsichord Violin or German Flute	3	6	6
3 Books of Favourite Hornpipes	Each	1	0
Adams's Psalms & Anthems for Country Churches Bound	5	0	0
Instruction Books to learn the Violin, Flute, German Flute, Fife, Guittar, French Horn, Harpsichord, Hautboy, Bagpipe, Flagelet, and Singing	Each	1	6

The Rattle

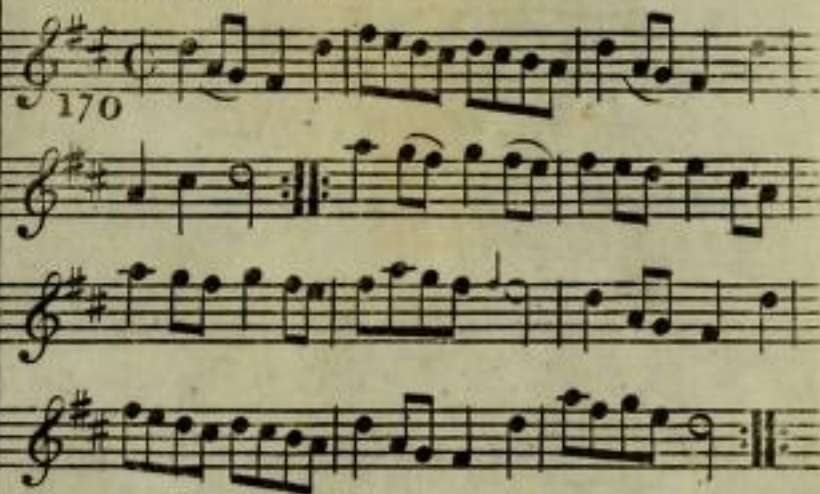
1772



Hey contrary sides ♪ then Hey on your own sides ♪
Gallop down & up & cast off 1 Cu. ♪ hands four at
bottom & Right & Left at top ♪

The Round about

85



The 1st Man set across to the 2^d Wo. & turn ♪ the
Wo. do the same ♪ cross over 2 Cu. lead up the
middle & cast off ♪ hands 4 round at bottom
Right & Left at top ♪

Aldridge's Rant



Turn Right hands & cast off 1 Cu. ∴ turn Left hands & cast up again ∴ lead down the middle up again & cast off ∴ hands 4 round at bottom ∴ Right & Left at top ∴

The London Assembly



Turn Right hands & cast off 1 Cu. ∴ turn Left hands & cast off below the 3^d Cu. ∴ lead up the middle & cast off 1 Cu. & thro' the bottom & cast up into the 2^d Cu. place ∴ hands four round at bottom and Right & Left at top ∴

Brightelmstone Hot Bath



The 1st Cu. cast off & hands all 4 round $\dot{=}$ cast up
 hands all 4 round $\dot{=}$ Gallop down & up & cast off
 $\dot{=}$ Right and Left $\dot{=}$

Charles Street Walk



The 1st Man cast off & turn the 3^d Wo. $\dot{=}$
 1st Wo. do the same $\dot{=}$ lead thro' the bottom
 & cast up $\dot{=}$ lead thro' the top & cast off $\dot{=}$
 fall in bottom & top foot it 3 & 3 $\dot{=}$ the
 same sideways $\dot{=}$ lead out sides $\dot{=}$

Windfor Terrace



Hey contrary fides ♪ then Hey on your own fides
 ♪ lead down the middle up again & cast off ♪
 Right & Left at top ♪

Knights' of the Garter

88



The 1st Cu. cros over & turn ♪ then cros over
 the 3^d Cu. & turn ♪ lead up to the top foot it
 & cast off ♪ hands fix round ♪

La Tonva

Musical notation for 'La Tonva' consisting of four staves. The first staff begins with a treble clef, a key signature of one sharp (F#), and a time signature of 2/4. The number '177' is written below the first staff. The music features a complex rhythmic pattern with many sixteenth notes and rests.

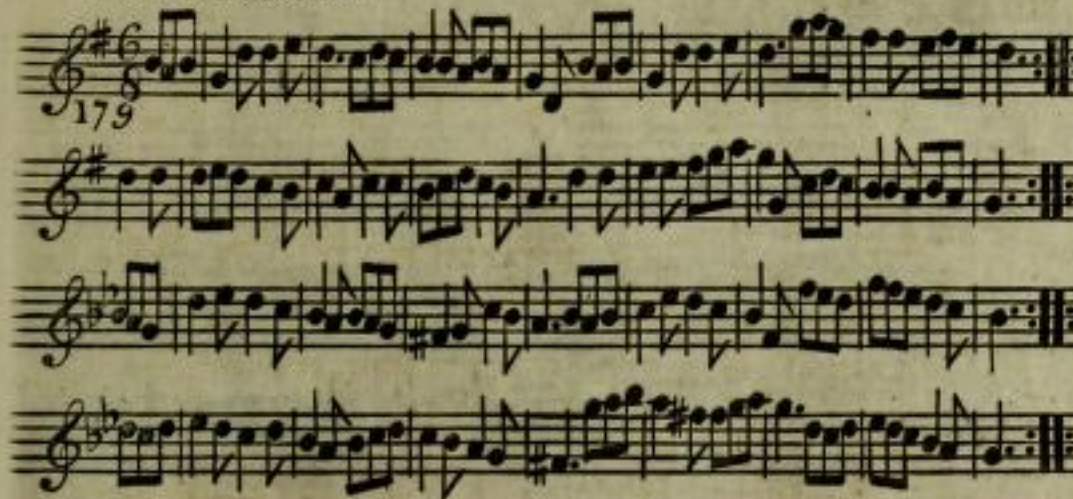
1st & 2^d Cu. Right hands across round — Left hands back again — lead down 1 Cu. cast off the 3^d Cu. & lead up to the top — set 3 & 3 top & bottom — then on the sides — lead out sides —

Portsmouth Harbour

Musical notation for 'Portsmouth Harbour' consisting of four staves. The first staff begins with a treble clef, a key signature of one sharp (F#), and a common time signature (C). The number '178' is written below the first staff. The music features a complex rhythmic pattern with many sixteenth notes and rests.

Hands 6 round — back again — 1st Man Allemande with the 2^d Wo. 1st Wo. do the same with the 2^d Man at the same time — the same with the 3^d Cu. — Hey all round — lead up the middle & cast off — Allemande with your Partner —

The Installation



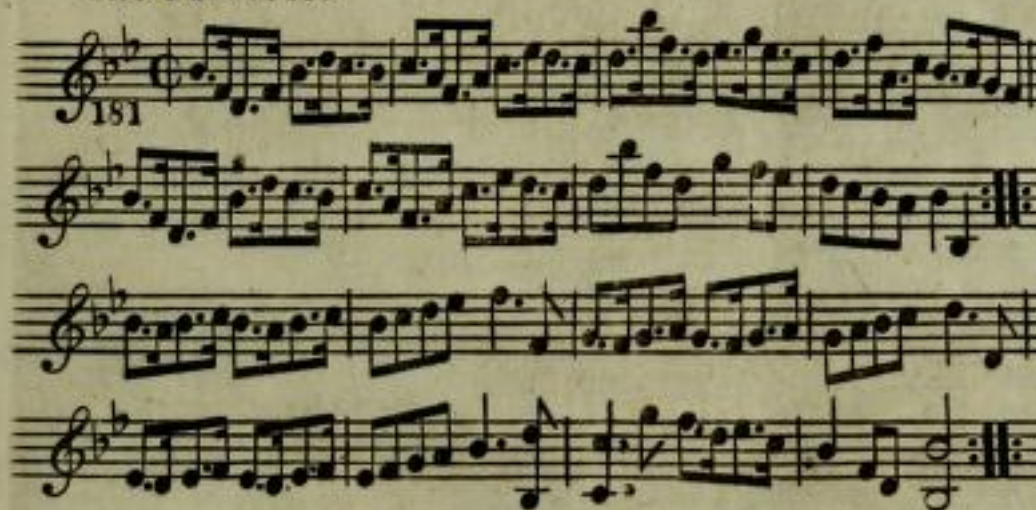
The 1st Man Hey on the 1st Wo. side :: then Hey on their own sides :: lead thro' the 2^d Cu. cast up & turn :: 2^d Cu. lead up cast off & turn :: foot it 4 half Right & Left :: the same back again :: cross over & figure at top :: Right & Left ::

The Bells of Osley



The 1st Cu. foot it to the 3^d Wo. & turn :: then to the 3^d Man :: cross over 1 Cu. lead thro' the bottom & cast up :: Right & Left ::

The Favourite



Foot it all 4 half Right & Left ; the same back again ;
 crofs over 2 Cu. lead up the middle foot it & cast off ;
 hands 4 at bottom Right & Left at top ;

The Whim



Right hands acrofs quite round ;
 Left hands back again ; crofs over
 half figure ; Right & Left ;

Paddy Wack

Turn Right hands & cast off 1 Cu. lead thro' the bot-
tom & cast up :: turn Left hands lead thro' the top &
cast off :: hands 6 round :: Right & Left at top ::

The Hamburg Dance

92

Foot it all 4 & change places :: the same back
again :: lead down the middle up again & cast off
1 Cu. :: hands 4 at bottom Right & Left at top ::

Vicar & Mofes

The Maid of Bath

Musical notation for 'Vicar & Mofes' consisting of four staves. The first staff is in treble clef with a 6/8 time signature and a key signature of one flat (B-flat). The number '185' is written below the first staff. The notation includes various rhythmic values such as eighth and sixteenth notes, and rests, ending with a double bar line.

Musical notation for 'The Maid of Bath' consisting of four staves. The first staff is in treble clef with a 6/8 time signature and a key signature of two sharps (F# and C#). The number '186' is written below the first staff. The notation includes various rhythmic values and ornaments, ending with a double bar line.

The 1st Cu. cros over 2 Cu. i cros up again i:
 Right hands acros round i Left hands back
 again i fet acros & turn ii the Wo. do the same ii:
 cros over half figure ii Right & Left ii:

The 1st Cu. cast off 1 Cu. & cros over the 3^d
 Cu. i the same up again ii lead down 2 Cu. the
 2^d & 3^d Cu. follow ii cros over & turn ii:

Lord Clive

Musical notation for 'Lord Clive' in 2/4 time, starting at measure 187. The piece consists of four staves of music. The first staff begins with a treble clef, a key signature of one flat (B-flat), and a 2/4 time signature. The melody is written in a single line. The second staff contains a repeat sign. The third staff includes a trill ornament over a note. The fourth staff concludes with a double bar line.

Hands all four a cross and foot it. \div hands all four a cross
back a gain and Foot it \div cross over two Cu: and half
figure right Hands and left \div \div

The Slipper

94

Musical notation for 'The Slipper' in 2/4 time, starting at measure 188. The piece consists of four staves of music. The first staff begins with a treble clef, a key signature of one sharp (F#), and a 2/4 time signature. The melody is written in a single line. The second staff contains a repeat sign. The third and fourth staves continue the melody and conclude with a double bar line.

The first Cu: cast down two Cu: and foot it \div cast
up again and foot it \div cross over one Cu: lead thro
the 3^d Cu: cast up right Hauds and left \div \div

The Tea Pot

Musical notation for 'The Tea Pot' in G major, 6/8 time. The piece consists of four staves of music. The first staff begins with the number 189. Trills (tr) are indicated above the first and third notes of the first and third staves. The piece concludes with a double bar line.

Three Hands round and foot it on the Mans side ♪ Three round on the Wo: side ♪ set all four Crofs over and right Hands and left ♪ ♪

Hob and his Nob

95

Musical notation for 'Hob and his Nob' in G major, 6/8 time. The piece consists of four staves of music. The first staff begins with the number 190. The piece concludes with a double bar line.

The first Man sets to the 2^d Wo: and turns her ♪ her Partner does the same with the 2^d Man the first Cu: cross over two Cu: and lead up and cast of ♪ ♪

The Brill

Musical notation for 'The Brill' in G major, 2/4 time. The piece consists of three staves of music. The first staff begins with the number 191. The music features a mix of eighth and sixteenth notes, with some triplet markings. The key signature has one sharp (F#).

The first Cu: set to the 2^d Wo: and turn ↺ set to
the Second Man and turn ↺ cross over and half
Figure ↺ right hands and left ↺

The Petticoat - *tr* white

96

Musical notation for 'The Petticoat' in G major, 2/4 time. The piece consists of three staves of music. The first staff begins with the number 192. The music features a mix of eighth and sixteenth notes, with some triplet markings. The key signature has one sharp (F#).

The first and second Man Lead thro' the first and
2^d Women ↺ Lead thro' and cast back and turn ↺
cross over two Cu: ↺ lead up and turn ↺