

Shoalhaven Folk Club Bush Dance 3 May 2014

Galopede

Galopede D
The Drover G
1234 G

Laverock Galop

Unnamed Polka No.1 D
Unnamed Polka No.2 G
The Old Woman From France G

Swedish Masquerade

Swedish Masquerade G

Cheltenham Flier

Mr McCormicks Invention G
The Old Set Tune D
Edgar Laceys Set Tune D

Luciens Waltz

Sad The Cuckoo Is Calling G
Peek-a-boo Waltz D
Cec Taylors Waltz D

Shepherds Circle

Pat Horgans 1 D
Pat Horgans 2 Em
£40 Float D

Dashing White Sergeant

Dashing White Sergeant D
The White Cockatoo G
Frank Collins 1st Polka D

Cranky Ingenuity (Contra)

Rally Round The Flag D
Year Of Jubilo D
Down The Brae G

Pride of Erin

Believe Me... G
Mudgee Waltz D
Your Smile Tonight Mother Dear D
Only the Leaf of a RoseBud D

Farmers Jig

Upstairs Downstairs G
Wattle Flat Races G
Wallaby Rocks G

THE GALOPEDE

Musical score for 'THE GALOPEDE' in G major, 2/4 time. The score consists of four staves of music. The first staff begins with a treble clef, a key signature of one sharp (F#), and a common time signature (C). The melody is written in a simple, rhythmic style. Chords are indicated above the notes: D, G, and A7. The second staff continues the melody with chords D, G, A7, and D. The third staff has chords D, A7, D, G, D, and A7. The fourth staff has chords D, A7, D, G, A7, and D. There are first and second endings marked with '1' and '2' above the staves.

THE DROVER

From Joe Yates Sofala NSW

Musical score for 'THE DROVER' in G major, 2/4 time. The score consists of four staves of music. The first staff begins with a treble clef, a key signature of one sharp (F#), and a common time signature (C). The melody is more complex, featuring triplets and sixteenth notes. Chords are indicated above the notes: G, C, G (with a triplet), Em, A7, and D7. The second staff has chords A7, D7, G, C, and G. The third staff has chords A7, D7, and G. The fourth staff has chords C, G (with a triplet), A7, D7, and G. There are first and second endings marked with '1' and '2' above the staves.

1 2 3 4

From Eileen McCoy Bega NSW

Musical score for '1 2 3 4' in G major, 2/4 time. The score consists of four staves of music. The first staff begins with a treble clef, a key signature of one sharp (F#), and a common time signature (C). The melody is simple and rhythmic. Chords are indicated above the notes: G, D7, and G. The second staff has chords G, D7, and G. The third staff has chords C, G7, C, and G7. The fourth staff has chords G7, C, G7, and C. There are first and second endings marked with '1' and '2' above the staves.

UNNAMED POLKA No 1

From Joe Yates, Sofala, NSW

Musical score for Unnamed Polka No 1, featuring six staves of music in G major and 2/4 time. The score includes various chords such as D, A7, Em, and G.

UNNAMED POLKA No 4

From Joe Yates, Sofala, NSW

Musical score for Unnamed Polka No 4, featuring six staves of music in G major and 2/4 time. The score includes various chords such as G, D7, and C. It features first and second endings.

THE OLD WOMAN FROM FRANCE

From Joe Yates, Sofala NSW

Musical score for The Old Woman from France, featuring six staves of music in G major and 2/4 time. The score includes various chords such as D7, G, C, Em, and Am. It features first and second endings.

SWEDISH MASQUERADE.

The musical score for "SWEDISH MASQUERADE." is written in G major (one sharp) and 4/4 time. It consists of five staves of music. The first staff begins with a treble clef, a key signature of one sharp (F#), and a 4/4 time signature. The melody starts with a quarter rest, followed by a series of eighth and quarter notes. Chords G, D7, C, D7, and G are indicated above the staff. The second staff continues the melody with chords G, C, G, D7, and G. A first ending bracket labeled "1+3" spans the final two measures. The third staff features a second ending bracket labeled "2." and a key signature change to D major (two sharps) for the final two measures, with chords G, G, C, and G. The fourth staff continues with chords D7, G, C, and G. The fifth staff begins with a D7 chord and a first ending bracket labeled "1.", followed by a second ending bracket labeled "2." and a final double bar line.

64. Mr McCormick's Invention

Bob Rummery

♩. = 120

Musical score for 'Mr McCormick's Invention' in G major, 6/8 time. The score consists of two staves. The first staff begins with a treble clef, a key signature of one sharp (F#), and a 6/8 time signature. The tempo is marked as ♩. = 120. The first staff contains the melody with chords G, D7, G, G, and a first ending with D7 G and a second ending with D7 G. The second staff contains the bass line with chords D, G, C, D, C, G, C, G, and a first ending with G and a second ending with D7 G.

90. The Old Set Tune

♩. = 120

Musical score for 'The Old Set Tune' in D major, 6/8 time. The score consists of two staves. The first staff begins with a treble clef, a key signature of two sharps (F# and C#), and a 6/8 time signature. The tempo is marked as ♩. = 120. The first staff contains the melody with chords D, Em, A, D, Em, A, D. The second staff contains the bass line with chords D, Em, A, D, Em, A, D.

28. Edgar Lacey's Set Tune

from Beverley Moore, Warrnambool, NLA, ORAL TRC 3388/5
by Rob Willis & John Harpley
transcribed by Angela Garland & John Harpley

♩. = 120

Musical score for 'Edgar Lacey's Set Tune' in D major, 6/8 time. The score consists of four staves. The first staff begins with a treble clef, a key signature of two sharps (F# and C#), and a 6/8 time signature. The tempo is marked as ♩. = 120. The first staff contains the melody with chords D, A, D. The second staff contains the bass line with chords D, A, D. The third staff contains the melody with chords D, A, A, D, D7. The fourth staff contains the bass line with chords D, A, D.

SAD THE CUCKOO IS CALLING

From Joe Cashmere, Booligal, NSW

Musical score for 'Sad the Cuckoo is Calling' in G major, 3/4 time. The score consists of four staves of music. The first staff begins with a G chord and features a melodic line with eighth and sixteenth notes. The second staff continues the melody with an Am chord. The third and fourth staves feature a rhythmic accompaniment of eighth notes, with D7 and G chords indicated above the staff.

PEEK-A-BOO WALTZ

From Don McBain, Nelson, Victoria

Musical score for 'Peek-a-boo Waltz' in D major, 3/4 time. The score consists of four staves of music. The first staff begins with a D chord and features a melodic line with eighth notes and a triplet of eighth notes. The second staff continues the melody with a G chord and an A7 chord. The third and fourth staves feature a rhythmic accompaniment of eighth notes, with D and A7 chords indicated above the staff.

CEC TAYLOR'S WALTZ

From Cec Taylor and Harry Venn, Wirri, NSW

Musical score for 'Cec Taylor's Waltz' in D major, 3/4 time. The score consists of four staves of music. The first staff begins with a D chord and features a melodic line with eighth notes. The second staff continues the melody with a G chord and an A7 chord. The third and fourth staves feature a rhythmic accompaniment of eighth notes, with D and A7 chords indicated above the staff. The score includes several triplet markings over eighth notes.

35. PAT HORGAN'S #1

D G A D
 G A D Em D
 Em G D Em

36. PAT HORGAN'S #2.

Em D Em D Em D
 Em D Em Em
 G D Em D Em

37. £40 FLOAT.

D G D G A D G
 D A D D G D G A
 D G D A D

DASHING WHITE SERGEANT

DASHING WHITE SERGEANT

Musical notation for "Dashing White Sergeant" in G major, 2/4 time. The piece consists of two systems of two staves each. The first system includes a repeat sign and a first ending bracket. The second system includes a second ending bracket. Chord symbols are placed above the notes.

Chord symbols: D, D, A7, D, Em, A7, A7, A7, Bm, A7, D, A7, D, Em, A7, D, Em, D, A7, D.

THE WHITE COCKATOO

Musical notation for "The White Cockatoo" in G major, 2/4 time. The piece consists of two systems of two staves each. The first system includes a repeat sign. Chord symbols are placed above the notes.

Chord symbols: G, C, G, G, C, D7, G, C, G, Em, G, D7, G, Em, D, Em, G, D, Em.

FRANK COLLINS' FIRST POLKA

Musical notation for "Frank Collins' First Polka" in G major, 2/4 time. The piece consists of two systems of two staves each. The first system includes a repeat sign and a first ending bracket. The second system includes a second ending bracket. Chord symbols are placed above the notes.

Chord symbols: D, G, D, A7, D, G, D, A7, D, D, A7, D, D, A7, D.

Rally 'Round the Flag

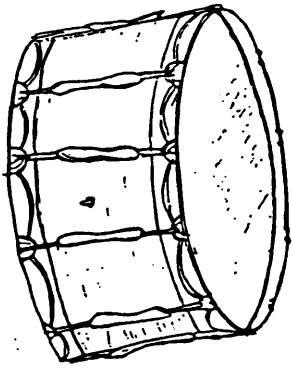
Musical score for 'Rally 'Round the Flag' in D major, 4/4 time. The score consists of four staves. The first staff is the melody, with notes: D4, E4, F#4, G4, A4, B4, C#5, B4, A4, G4, F#4, E4, D4. The second staff is a second voice, with notes: D4, E4, F#4, G4, A4, B4, C#5, B4, A4, G4, F#4, E4, D4. The third staff is a bass line, with notes: D4, E4, F#4, G4, A4, B4, C#5, B4, A4, G4, F#4, E4, D4. The fourth staff is a bass line, with notes: D4, E4, F#4, G4, A4, B4, C#5, B4, A4, G4, F#4, E4, D4. Chords are indicated above the notes: D, G, D, A, D, A, D, A, D.

The Year of Jubilo

Musical score for 'The Year of Jubilo' in D major, 4/4 time. The score consists of four staves. The first staff is the melody, with notes: D4, E4, F#4, G4, A4, B4, C#5, B4, A4, G4, F#4, E4, D4. The second staff is a second voice, with notes: D4, E4, F#4, G4, A4, B4, C#5, B4, A4, G4, F#4, E4, D4. The third staff is a bass line, with notes: D4, E4, F#4, G4, A4, B4, C#5, B4, A4, G4, F#4, E4, D4. The fourth staff is a bass line, with notes: D4, E4, F#4, G4, A4, B4, C#5, B4, A4, G4, F#4, E4, D4. Chords are indicated above the notes: D, A, D, A, D, A, D, A, D.

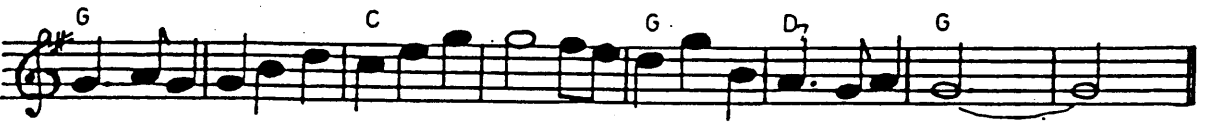
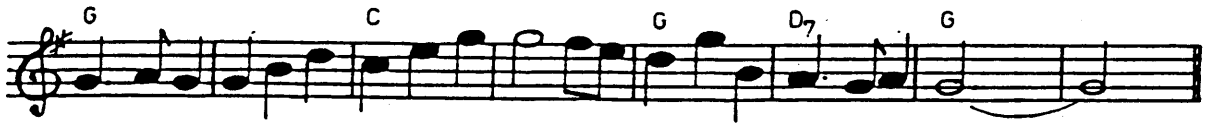
Down the Brae

Musical score for 'Down the Brae' in D major, 4/4 time. The score consists of four staves. The first staff is the melody, with notes: D4, E4, F#4, G4, A4, B4, C#5, B4, A4, G4, F#4, E4, D4. The second staff is a second voice, with notes: D4, E4, F#4, G4, A4, B4, C#5, B4, A4, G4, F#4, E4, D4. The third staff is a bass line, with notes: D4, E4, F#4, G4, A4, B4, C#5, B4, A4, G4, F#4, E4, D4. The fourth staff is a bass line, with notes: D4, E4, F#4, G4, A4, B4, C#5, B4, A4, G4, F#4, E4, D4. Chords are indicated above the notes: Em, C, Em, Bm, C, D, Bm, Em, C, Em, Bm, C, D, Em, Em, Bm, Bm, Em, Bm, C, D, Em.

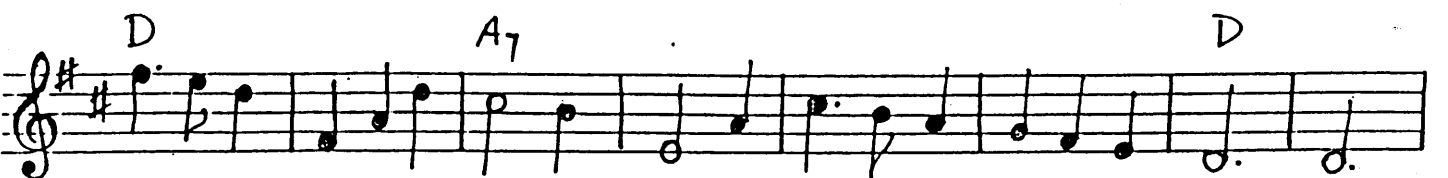


PRIDE

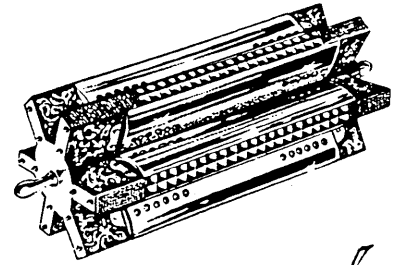
Believe Me If All Those Endearing Young Charms



Mudgee Waltz



OF ERIN



Your Smile Tonight Mother Dear

Musical notation for "Your Smile Tonight Mother Dear" in G major, 3/4 time. The piece consists of four staves of music. The chords indicated are D, A7, D, A7, D, A7, G, A7, and D.



Only the Leaf of a Rosebud

Musical notation for "Only the Leaf of a Rosebud" in G major, 3/4 time. The piece consists of four staves of music. The chords indicated are D, A7, G, D, D, Em, A7, D, D, Em, A7, and D.

CIRCISSIAN CIRCLE #2

UPSTAIRS DOWNSTAIRS Joe Yates Sofala NSW

Musical score for 'UPSTAIRS DOWNSTAIRS' in G major, 6/8 time. The score consists of four staves of music. The first staff begins with a G chord and a repeat sign. The second staff includes chords G, C, Am, D7, and G. The third staff includes chords G, D7, G, Am, and D7. The fourth staff includes chords G, D7, Am, D7, G, Bb7, and G. The piece concludes with a double bar line.

WATTLE FLAT RACES

Musical score for 'WATTLE FLAT RACES' in G major, 6/8 time. The score consists of four staves of music. The first staff begins with a G chord and a repeat sign. The second staff includes a D7 chord and a G chord with first and second endings. The third staff includes chords G, G, C, and D7, with first and second endings. The fourth staff includes a D7 chord and a G chord with first and second endings. The piece concludes with a double bar line.

WALLABY ROCKS

Musical score for 'WALLABY ROCKS' in G major, 6/8 time. The score consists of four staves of music. The first staff includes chords G, C, and D7, with first and second endings. The second staff includes chords G, C, D7, and G with first and second endings. The third staff includes D and A7 chords. The fourth staff includes D, A7, and D chords. The piece concludes with a double bar line.